



December Newsletter



IN THIS ISSUE

- *It's Safe to Say - A Message from our Leader*
- *Safety Minute - Don't Get Caught*
- *Speaker Series*
- *Working in Cold Weather*
- *Safety First, Last Thoughts - A Goal Without a Plan*

IT'S SAFE TO SAY

A Message from our Leader

We have made it to December and it is time to reflect on 2021. Some highlights from this past year are listed below, and I invite you to click on the icons or

contact us directly to learn more about them:

<ul style="list-style-type: none">• We delivered a six part webinar series over the months of January, February and March to support farms and ranches in their understanding of legislation, and occupational health and safety and developing a health and safety program. Check out the 2021 webinars here	<p>2022 Growing Farm Safety Webinar Series COMING SOON!</p> <p>Contact us to find out more</p>
<ul style="list-style-type: none">• We shared safety information for each letter of FARMERS CARE to help educate producers on the common hazards they face in their daily activities on the farm.	
<ul style="list-style-type: none">• Developing and launching the FARMERS CARE Level 1 Program to be a free, simple tool to help producers find realistic ways to prevent injuries and fatalities on the farm.	
<ul style="list-style-type: none">• Began delivering In The Know, a mental health workshop developed specifically for farmers, both on-line and in-person.	
<ul style="list-style-type: none">• Began development of AgSafe Alberta's SEED (Safety Education and Employee Development) platform, designed to provide easily accessible, time and cost-effective training options to producers, family members, employees and more!	

I also want to take this opportunity to wish you all the very best for this holiday season and a very safe and happy 2022! Thank you for your continued support and we look

forward to bringing you more safety resources and tools in the new year.

Lastly, if you have questions or concerns we are always here to help. You can contact our team anytime.

Jody Wacowich
AgSafe Alberta Executive Director



CONTACT US

For general inquiries: info@agSAFEab.ca /403-219-7901

For our hotline for incidence assistance: 1-833-9AGSAFE

agSAFEab.ca

Farms and Ranches are no longer exempt from the Alberta Occupational Health and Safety Code starting December 1, 2021. If you are not already, get up to speed by reading [last month's newsletter here](#) or [contact us directly.](#)

SAFETY MINUTE

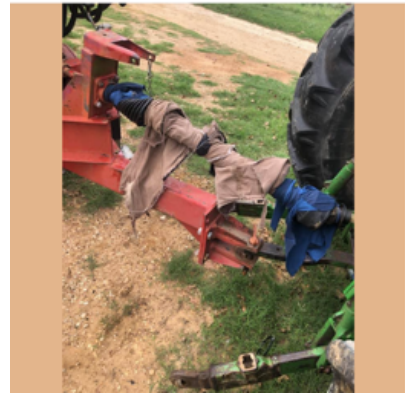
Don't Get Caught

According to Canadian Agricultural Injury Reporting, entanglements are the

leading cause of death on farms in the months of December, January, and February.

Key points from this report include:

- 15% of the time loose clothing and hair were the cause of the incident
- 20% of the time the deceased was performing another activity near the machine at the time
- 18% of the incidents found the victim had been cleaning or repair the machine without shutting it off
- 13% of the incidents involved the victim trying to remove a blockage from the machine without shutting it off



The images and details in the following article may be disturbing to some readers; proceed to the article at your own discretion: [Article: Pregnant Mum Scalped in Horror Farm Accident](#)

SPEAKER SERIES

AgSafe Alberta will be presenting six webinars lead by subject matter experts discussing important and relevant safety issues over the months of January, February and March. Be sure to register in advance to secure your spot!

[January 11, 2022 at 1:00 pm](#)

Ag Services in the Age of Tractors, Contractors, and Tik-Tok

- Christopher W. Spasoff, Founder & OH&S Lawyer at F2 Legal Counsel

[January 18, 2022 at 1:00 pm](#)

A Hitman's Guide to Psychological Safety at Work

- Bob Stenhouse, Principal Director at Veritas Solutions

FARMERS CARE

Complete **FARMERS CARE Level 1** before December 31, 2021 and be entered to
WIN A \$500 UFA GIFT CARD!

Take11.ca

Working in Cold Weather



When working in cold conditions, be on the lookout for any of these serious conditions, all of which require immediate and appropriate action:

- **Frost Nip:** Outer layers of skin become extremely cold and turn white in color but are not yet frozen. The ears, nose, cheeks, fingers, and toes are commonly affected. Skin may look red and feel numb when touched. Affected individuals should go someplace warm and gently rewarm the area through skin-on-skin contact (do not rub the area).
- **Frost Bite:** Both the outer skin and underlying tissues freeze. Affected areas may look white and feel hard when touched. Affected individuals

require medical attention and where possible, gently rewarm the affected area through skin-on-skin contact (do not rub the area).

- **Hypothermia:** The body temperature drops from its normal temperature of around 37°C to less than 34°C. Someone suffering the effects may begin to have trouble walking, trouble speaking, and lose dexterity in their hands and fingers. Shivering may be severe, or shivering may stop completely. If left untreated, may lead to a loss of consciousness or death. Affected individuals require immediate medical assistance. Place the person between blankets or towels so that their body temperature can slowly rise while enroute to the hospital or while waiting for emergency medical personnel to arrive.

For more information on working in extreme temperatures and how to treat the effects of it, take a few moments to look at WorkSafe Alberta's [Best Practice - Working Safely in the Heat and Cold](#).

SAFETY FIRST, LAST THOUGHTS

A Goal Without a Plan

Simply saying that safety is important and that you don't want to see anyone hurt doesn't actually keep anyone safe as much as we wish it did... in fact, it is like the old saying "A goal without a plan is just a wish."

How can you keep people safe on your farm or ranch? Take this opportunity to reflect on what you can do better this year and set a few practical, achievable goals to improve health and safety on your farm in 2022. They don't have to be huge goals, as even small things can add up and reduce the big risks on your farm. Consider the following examples:

- **Identifying and controlling the hazards on your farm;** visiting [TAKE11.ca](#) and reviewing the common hazards present on farms and ranches listed there can help you with this process.
- **Is there any new training that can be done or existing training that needs updated?** For example, does everyone have WHMIS 2015 training or is there always someone on the farm or at each worksite with current first aid training?

- **Having pre-job meetings or toolbox talks** with your family members and workers to discuss the work to be done, talk about what can go wrong and how to prevent it from happening, ensure everyone understands their role, etc.

For more ideas or if you don't know where to start, sign up for and complete the [FARMERS CARE Level 1 Program](#) or email us at info@agsafeab.ca.



This email was sent to <<Email Address>>
[why did I get this?](#) [unsubscribe from this list](#) [update subscription preferences](#)
AgSafe Alberta · #200 6815 8th St NE · Calgary, Alberta T2E 7H7 · Canada

