

EMERGENCY RESPONSE ON THE FARM



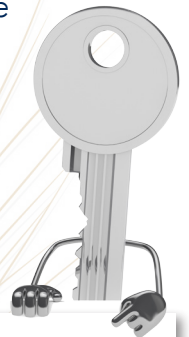
PHOTO CREDIT: CASA

INTRODUCTION

Our farms are located in rural Alberta and that means that emergency responders take longer to reach a victim or farm site that needs assistance. Setting up your emergency response plan is vital to protecting your family, farm workers and your farm.



Setting up your emergency response program is the best thing you can do to help others help you. Understanding what to do before an emergency occurs will provide the farm with the best opportunity to control injuries and minimize damage to your operation.



Emergency response programs can be anything from simple to complicated. So, let's have a look at the key elements of your program.

Here are the steps to QuickStart your: **EMERGENCY RESPONSE PROGRAM**



STEPS FOR EMERGENCY RESPONSE MANAGEMENT

Evaluate the Types of Emergencies

STEP 1 For your farm, what are the emergency situations that could happen? Build a list of all emergencies that could possibly occur. For example; Structural Fire, Medical Emergency, Work Alone Rescue, Grain Engulfment, Wild Fire, Tornado, Blizzard, Flooding, Fall from Height Rescue, Confined Space Rescue, Power Line Contact, Vehicle Incident, etc. For each emergency, develop the response plan and decide who is responsible to get help.

STEP 2 Identify Emergency Response

When one of the identified emergencies happens, what do you do? What does your family do? What do your farm workers do? Go through the process of deciding what your emergency response will be for each type of emergency.

Locate Emergency Equipment

Based on the types of emergencies, develop a plan where you will have emergency response equipment for your farm. Consider the following ideas:

- STEP 3**
- Will each piece of motorized equipment have a first aid kit?
 - Where are your fire extinguishers? What type of fire extinguishers do you need on equipment?
 - Will you have an AED on your farm?
 - How will farm workers rinse their eyes if needed?
 - How will you maintain your emergency response equipment?

Once you have the list, install the equipment and train everyone about where the equipment is stored and how to use it. Also discuss with your family and farm workers how to keep equipment in **ready** condition.



STEP 4

Key Contact Information

When an emergency happens, we have a hard time remembering what numbers to call. Writing down the key contact numbers and posting these where family and farm workers can find them is an important step to any emergency response program. Consider posting contact numbers by the phone, on safety boards, and within each piece of motorized equipment on the farm.

SUMMARY

Emergency preparation is best done sooner than later. Once you have your plan established, check it periodically to ensure that it is current and train your family and your farm workers about the program to help them prepare. When something happens, you will be glad you had a plan in place.

Emergency Response Form

Farm Emergency Response Contact Plan



Farm Site: <u>Main Farm</u>			
Farm Location: <u>Blue Sign Number: 612029</u>			
Emergency Evaluation			
Emergency	Emergency Response	Equipment	
Fire	Evacuate the area and assemble at the front gate Call fire department for assistance	Cell phone Fire Extinguisher Shovels Water truck Water Pump	
First Aid	Notify first aid worker	First aid kit	
Medical	Notify first aid worker. Call ambulance to main farm and meet to take to <u>injured</u>	Cell phone First Aid Kit Blankets	
Tornado	Meet in basement of main farm house. Call fire department for assistance.	Cell phone Flashlight Blankets Dust masks	
Spills	Contain the spill with dirt or spill equipment. Remove contaminated soil and dispose Dispose all contaminated garbage in proper bin. Notify government environment department (if needed).	Spill Kit Chemical Gloves Apron Face Shield Respirator	
Missing Worker	Call missing worker cell phone – if no answer, send someone out to check on their last location If needed, get neighbours to help. If worker is still missing, call police to assist with search	Cell phones Radios	
Key Contact Information			
Contact	Number	Contact	Number
RCMP	911	John (Farm Mgr)	1-780-2223-2121
Fire House	911	Peter (First Aider)	1-780-333-2222
Hospital	1-555-555-5555	STARS	1-888-224-4422
AB Environment	1-888-445-5555		

LET IT GROW FEED THE PROGRAM

With your emergency plan started, allow for changes and updates at least annually. Each year, make certain to revisit your plan and consider updates and improvements as your farm changes. Here are some quick points to consider:

- Build a map of your main farm sites. Include information that will tell the emergency response team about danger areas on your farm, for example: fuel storage, chemical storage, open pits, electrical contacts and gas lines. This will protect responders that rally to your assistance.
- Build a collection of emergency drills for each type of emergency in your plan. Plan to hold drill exercises or table top reviews with all farm workers to ensure that everyone knows what to do.
- Set up emergency stations for each yard site and include site maps, emergency contact information and emergency response plans. Plan the stations at the entrance to the yard and mark with a sign for everyone to see.
- List all the land operated by the farm and provide directions from the main yard site. This will help emergency response personnel to find you when needed.



PHOTO CREDIT: AGSMART



BE SURE TO VISIT
www.AgSafeAB.ca
 FOR MORE INFORMATION



AgSafe Alberta Resources

Our AgSafe website contains a lot of information for you to use. Here are some examples of information that you can find there to download.

- Hazard Management QuickStart
- Fatigue Management on the Farm QuickStart
- Working at Heights on the Farm QuickStart
- Confined Space Worker QuickStart
- Risk Management System Information

RESOURCES

Alberta Emergency Management Agency - <http://www.aema.alberta.ca/personal-emergency-preparedness>


Preparedness for Farm Animals - <https://www.getprepared.gc.ca/cnt/rsrscs/pblctns/frm-nmls/index-en.aspx>

Alberta Poultry Industry - <http://www.chicken.ab.ca/wp-content/uploads/2016/07/emergency-preparedness-information.pdf>

Agricultural Safety Association - <https://casa-acsa.ca/sites/default/files/2.6%20Emergency%20Plan.pdf>

Portal - <http://albertawater.com/stay-safe/emergency-preparedness/rural-community-flood-preparation>

FORMS



Farm Emergency Response Contact Plan

AgSafe ALBERTA

Form Site:

Farm Location:

Emergency Evaluation

Emergency	Emergency Response	Emergency

Key Contact Information

Contact	Number	Contact	Number

Emergency Response Plan Form

Farm Incident Review Form

AgSafe ALBERTA

Event Description:

Incident Location:

Incident Date:

FIVE WHYS REVIEW

Why	Answer
1. Why?	
2. Why?	
3. Why?	
4. Why?	
5. Why?	

Corrective Action(s) to Prevent this from Happening Again

Action Item	Date to Complete

Incident Reviewer: _____ Date of Review Completed: _____

Incident Review Form

HAZARD ID/NEAR MISS CARD

AgSafe ALBERTA

Hazard ☐ Near Miss ☐ Field ☐ Yard ☐
 Vehicle ☐ Shop ☐

Observer Name: _____

Date: _____ Location/Job: _____

Total Risk: ☐ HIGH ☐ MEDIUM ☐ LOW

Related Factors

Related Factors	Body Parts
<input type="checkbox"/> Environmental	<input type="checkbox"/> Head
<input type="checkbox"/> PPE	<input type="checkbox"/> Eye/Face
<input type="checkbox"/> Procedure	<input type="checkbox"/> Arm
<input type="checkbox"/> Facility	<input type="checkbox"/> Hand/Finger
<input type="checkbox"/> Manual Handling	<input type="checkbox"/> Foot
<input type="checkbox"/> New Worker	<input type="checkbox"/> Leg
<input type="checkbox"/> Other	<input type="checkbox"/> Other

Contributing Factors (circle)

☐ Body position: Risk of being struck, Caught Between, Falls from Height, Confined/Restricted Spaces, Missing Guards, Rails, Safety Devices Energy

☐ Isolation not established before work

Description of the hazard/near miss: _____

Hazard ID Form

Farm Fall Protection Plan

AgSafe ALBERTA

Farm Location where work will be performed: _____

Fall Hazards: _____

FALL PROTECTION SYSTEM TO BE USED: _____

ACCIDENT TO BE USED DURING THE WORK: _____

EXTRACTION/RESCUE SYSTEM TO BE USED: _____

RESCUE PLAN: _____

Signature: _____ Date: _____

Fall Protection Plan Form



AgSafe AB Connections



www.AgSafeAB.ca



@AgSafeAB



www.facebook.com/AgSafeAB.ca

Disclaimer – These documents have been designed to assist the farm with a quick introduction to safety at the farm gate. To comply with legislation, farm management will need to evaluate legislation in your local jurisdiction and seek the advice of a safety professional to help you meet regulatory requirements that apply to your specific farming operation.